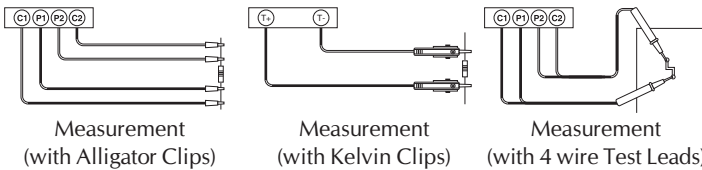




7002, 7272

Application



Electrical Specifications (23°C ± 5°C)

Manual Range

	Resistance Range	Resolution	Accuracy
10A (7272)	400μΩ ~ 4000μΩ	1μΩ	±0.25% ± 25μΩ
	1.500mΩ ~ 16.000mΩ	1μΩ	±0.25% ± 25μΩ
	5.000mΩ ~ 60.000mΩ	1μΩ	±0.25% ± 25μΩ
5A (7002)	1.000mΩ ~ 8.000mΩ	1μΩ	±0.25% ± 25μΩ
	5.00mΩ ~ 32.00mΩ	10μΩ	±0.25% ± 250μΩ
	10.00mΩ ~ 120.00mΩ	10μΩ	±0.25% ± 250μΩ
1A	4.00mΩ ~ 40.00mΩ	10μΩ	±0.25% ± 250μΩ
	15.00mΩ ~ 160.00mΩ	10μΩ	±0.25% ± 250μΩ
	50.00mΩ ~ 600.00mΩ	10μΩ	±0.25% ± 250μΩ
100mA	0.0400Ω ~ 0.4000Ω	100μΩ	±0.25% ± 2.5mΩ
	0.1500Ω ~ 1.6000Ω	100μΩ	±0.25% ± 2.5mΩ
	0.5000Ω ~ 6.0000Ω	100μΩ	±0.25% ± 2.5mΩ
10mA	0.400Ω ~ 4.000Ω	1mΩ	±0.25% ± 25mΩ
	1.500Ω ~ 16.000Ω	1mΩ	±0.25% ± 25mΩ
	5.000Ω ~ 60.000Ω	1mΩ	±0.25% ± 25mΩ
1mA	4.00Ω ~ 40.00Ω	10mΩ	±0.25% ± 250mΩ
	15.00Ω ~ 160.00Ω	10mΩ	±0.25% ± 250mΩ
	50.00Ω ~ 600.00Ω	10mΩ	±0.25% ± 250mΩ
100μA	0.0400kΩ ~ 0.4000kΩ	100mΩ	±0.75% ± 3Ω
	0.1500kΩ ~ 1.6000kΩ	100mΩ	±0.75% ± 3Ω
	0.5000kΩ ~ 6.0000kΩ	100mΩ	±0.75% ± 3Ω

Features

- Basic Accuracy 0.25%
- Max. Test Current : 10A (60mΩ) for 7272, 5A (120mΩ) for 7002
- Manual or Auto Range
- Four Terminal Kelvin Measurement
- 6 Ranges with 1μΩ Best Resolution
- Measurement of Resistive and Inductive Materials
- Setting for HI, LO & PASS Readings
- Memory of 3000 Measurements Data
- Programmable HI-LO Alarm with memory of 20 Data
- Large LCD with Backlight & HOLD Function
- Low Power Consumption
- Battery Operated (Rechargeable Battery)
- Low Battery indication
- LED indication for Invalid Resistance Measurement
- Cable Length Measurement in feet & meters
- User Interface Software for PC Communication via RS232C (to USB Bridge) Cable
- Built-in Battery Charging Circuit & Calendar Clock

General Specifications

- Battery Charging Time 10Hrs
- AC Adaptor : Input 110V or 220V AC, Output DC 15V/1 ~ 3A
- LCD Display 4 5/6 Digit + Backlight
- Dimension : 260 x 158 x 70mm (approx.)
- Weight : 1125gms Including Battery (approx.)
- Environment : 0°C ~ 50°C ≤ 85% RH (Operation)
:-20°C ~ 60°C ≤ 75% RH (Storage)

Accessories

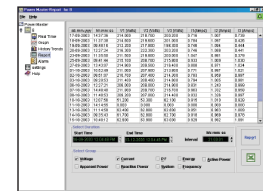
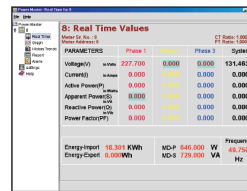
- Users Manual x 1 ● Software Manual x 1 ● Software CD x 1
- RS232C (to USB Bridge) Cable x 1 ● AC Adaptor x 1
- 11.1V Rechargeable Lithium Battery (1600mAh) x 1 for 7002
- 11.1V Rechargeable Lithium Battery (3400mAh) x 1 for 7272
- 1 Set of Kelvin Clips
- Carrying Bag ● Optional : 4 Wire Test Leads

Electrical Specifications (23°C ± 5°C)

Auto Range

	Resistance Range	Resolution	Accuracy
10A (7272)	400μΩ ~ 60.000mΩ	1μΩ	±0.25% ± 25μΩ
5A (7002)	1.000mΩ ~ 8.000mΩ	1μΩ	±0.25% ± 25μΩ
	8.00mΩ ~ 120.00mΩ	10μΩ	±0.25% ± 250μΩ
1A	4.00mΩ ~ 600.00mΩ	10μΩ	±0.25% ± 250μΩ
100mA	0.0400Ω ~ 6.0000Ω	100μΩ	±0.25% ± 2.5mΩ
10mA	0.400Ω ~ 60.000Ω	1mΩ	±0.25% ± 25mΩ
1mA	4.00Ω ~ 600.00Ω	10mΩ	±0.25% ± 250mΩ
100μA	0.0400kΩ ~ 6.0000kΩ	100mΩ	±0.75% ± 3Ω

Software



Application program to represent Real Time Values & Facility to open / save recorded data, plot data, export data, print display screen, parameter setting etc. The screen also displays current time, start time, system mode, sample rate, high limit, low limit, sample count & present sample value. The program also supports plotting of present or recorded data.